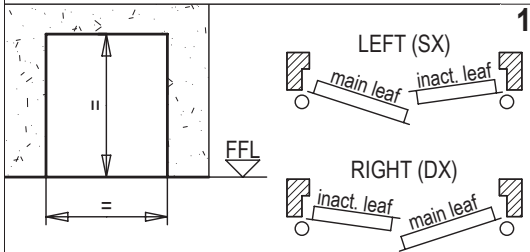


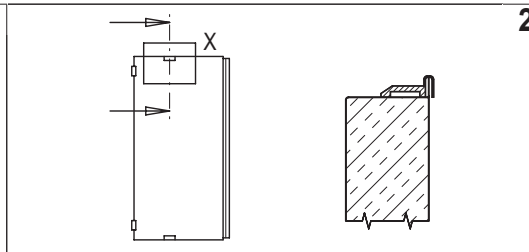
# INSTALLATION, USE AND MAINTENANCE HANDBOOK FOR TWO-LEAVED REVER DOORS

**NINZ S.p.A.**  
corso Trento, 2/A  
I-38061 ALA (TN) / ITALY

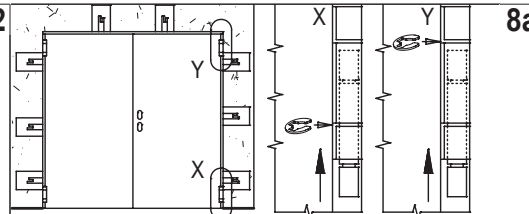
**I58-GB**  
5001028/2  
04/13 1/2



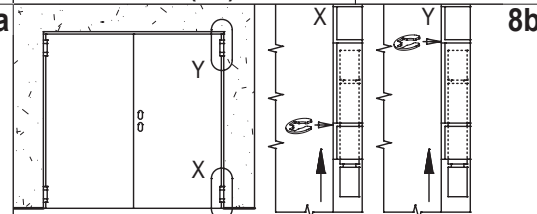
1 Unpack the doorframe and verify the correspondence between the wall opening and the sticker. Establish the finished floor level (FFL) and the opening direction.



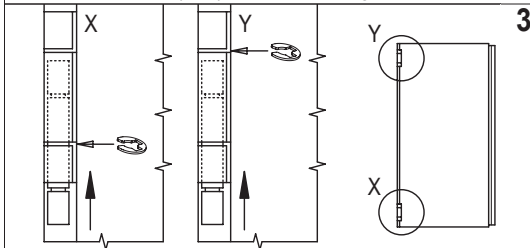
2 Unpack the inactive leaf and insert the plastic spacers at top and at bottom (see detail X). The spacers are supplied with the floor catch set in the handle package.



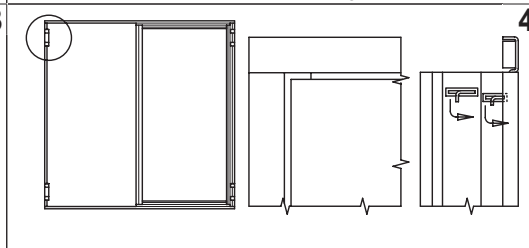
8a Fasten the main leaf following the same procedure as for the inactive leaf. Fix the anchors with rapid setting cement. When the cement will be solid, remove the two angle-iron to set free the inactive leaf. It is imperative to re-tighten both screws (part. 4a - draw. 5) at the top and bottom of inactive leaf.



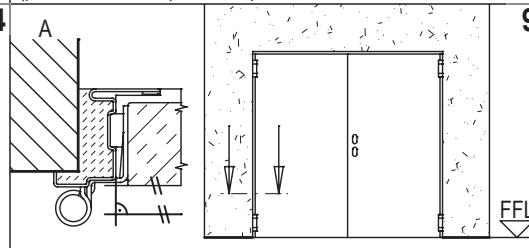
8b Remove the two angle-iron to open the inactive leaf. It is imperative to re-tighten both screws (part. 4a - draw. 5) at the top and bottom of inactive leaf. Complete the fastening of the doorframe as previously explained and close the leaf. Install the main leaf following the same procedure as for the inactive leaf.



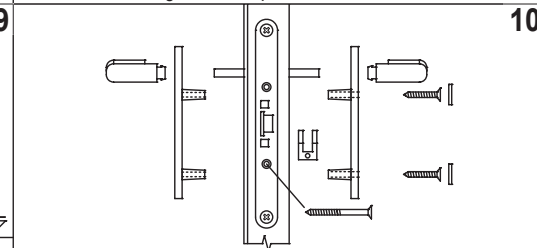
3 Fix one jamb on the inactive leaf by inserting in the hinges the two pins and block them with the retaining rings. Perform the operation very carefully.



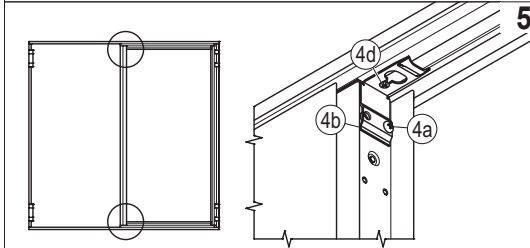
4 Join together the two transoms and the jamb with the fixing flaps. Bend the flaps on the four corners to block the doorframe.



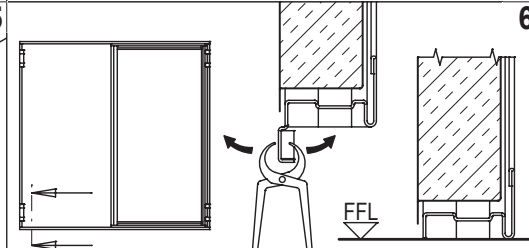
9 Fill up the space between frame and wall with mortar (detail A) without bending the frame.



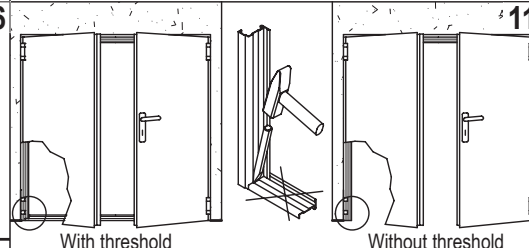
10 Mount the handle set.



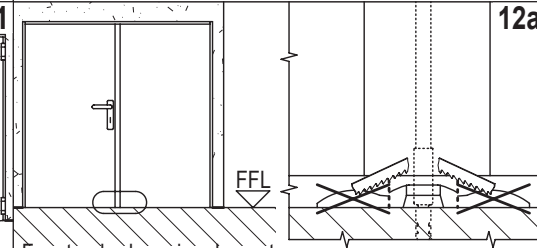
5 Screw on the two angle-irons (4b) fixed on the extremities of the central jamb to fasten the transoms on the secondary leaf. The screws (4d) are supplied with the handle set.



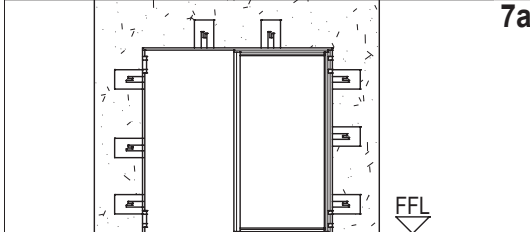
6 Remove the cover profile from threshold to place the doorset upon the Finished Floor Level (FFL).



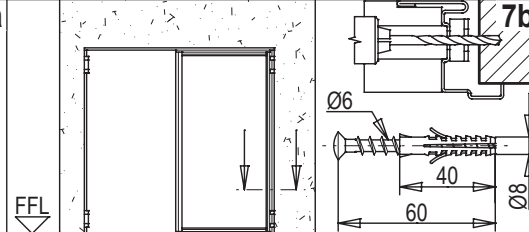
11 Remove all spacers between leaf and doorframe. In case the threshold is not needed cut it with a chisel.



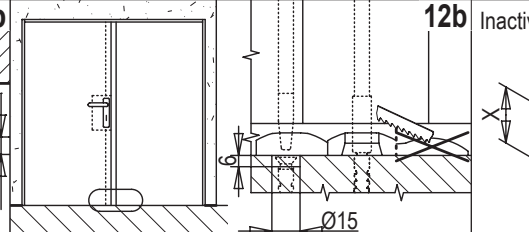
12a For standard-version doorset fix the floor catch for the lower rod of the secondary leaf with an expansion screw and a drop of silicone and cut the four unneeded guides.



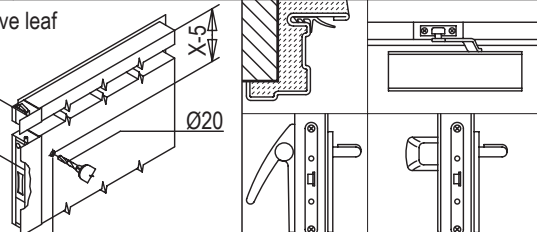
7a Bend up the frame-anchors and prepare the correspondent holes in the wall. Temporarily fix the door parallel to the wall respecting the plumb line and the FFL.



7b Fix the door, parallel to the wall, respecting the plumb line and the FFL. Fix the accessible part of the doorframe at each anchoring position with expansion screws type Wüsth art. 0903 8 40 and Spax-screws 6x60 (not supplied).



12b For SECUR-version doorset place the Secur insert in the floor catch and fasten the set for vertical rods, with two screws/dowels. Remove the two unneeded guides.



12c Inactive leaf  
Drill the first sheet metal in case of panic bar A.  
Optional: rebate sealing - door closer - EXUS, TWIST or SLASH panic bar.

# INSTALLATION, USE AND MAINTENANCE HANDBOOK FOR TWO-LEAVED REVER DOORS

I58-GB 2/2

## GENERAL NOTES

**LIABILITY:** it is duty of the installer to follow the installation instructions in any detail.

**FINISHING:** the serial door is finished with an epoxy-polyester powder paint oven-baked at 180°C. The surface is orange-skin and particularly resistant. In case an additional paint is desired we advise to follow these instructions:

- make smooth the surfaces with sandpaper and dust them;
- give a first hand of opaque 2 components epoxide using the product ALCEA EPOX 5203 / 0059 (beige);
- finish the surfaces with enamels or paints to your choice.

**CLEANING:** the doors are supplied from the factory clean and packed. We suggest to use a clothe and soaped water only. Do not scratch the surfaces.

**WARRANTY:** the manufacturer gives warranty as per Italian law (C.C.1495). Any claim for missing or damaged goods have to be recorded by inserting a written remark in the delivery notes and must be notified the maximum within eight days from the date of materials receipt.

## USE AND MAINTENANCE INSTRUCTIONS FOR REVER DOORS

All doors must be controlled to verify that there are no damages and that they close well. Controls must be done periodically to assure that door-leaf turns freely, that closing and opening devices are efficient and that doors close perfectly. Doors must be kept free from obstructions.

Any 5.000 opening cycles but at least every 6 months the following operations shall be carried out:

- lubricate hinges;
- lubricate the lock and the latch bolt housing;
- verify the functionality of the secondary leaf's rods and lubricate their guide rail;
- eliminate any dirt from the hole of the floor catch;
- lubricate the central manual deadbolt;
- in case of secondary leaf with panic bar, lubricate the central lock and the upper bolt-device.

For doors with three closing points more checks have to be done:

- verify the regular working of the closing rods and lubricate their guide rail;
- eliminate any dirt from the hole of the floor catch.

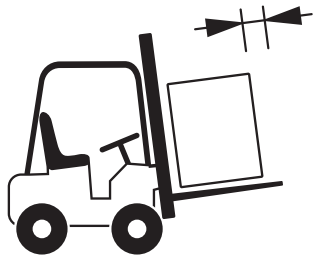
Verify the regular functionality of any optional accessories of the door (handle, panic bar, door closer etc.). Their mobile parts shall be lubricated too, following their maintenance instructions.

In case of irregular functioning of the door or its accessories, we suggest to contact our sales office to require the intervention of an authorized installer or the supply of spare parts.

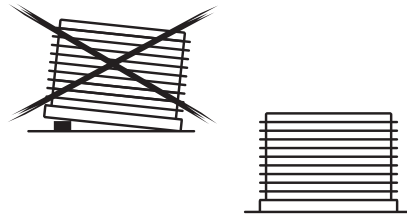
N.B.: for lubrication use viscous products.

## STORAGE INSTRUCTIONS

It is duty of the company/person taking over the goods to store them in a suitable place so that they will be protected from the natural agents and from the direct sun rays. If during transportation or truck unloading it rains or snows on the goods it is necessary to remove immediately the nylon film from each leaf and doorframe, put the goods in vertical position to dry them appropriately. In case of external visible defects on doors, they have to be marked in the copy of the transportation document to be returned to the forwarder and notified to the manufacturer by registered mail within 48 hours. We remember that according to our general conditions intrinsic defects have to be notified to the manufacturer within 8 days from the delivery date by registered mail. Goods with defects never have be utilized or assembled, they should be stored at disposal for controls by the manufacturer appointed person.



Move the materials with appropriate means.



Store and handle the materials with care.



Assemble by qualified staff only.



Do not expose the materials to the natural agents.