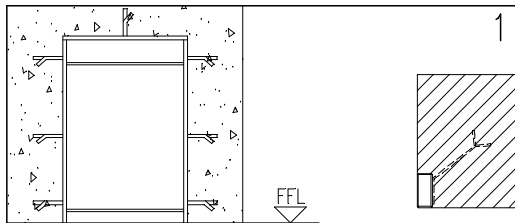


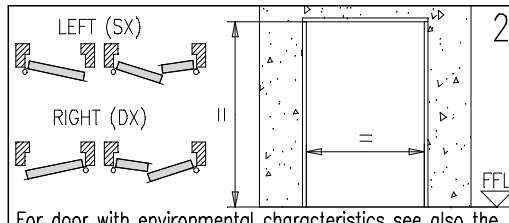
INSTALLATION HANDBOOK, APPLICATION AND MAINTENANCE FOR PROGET DOORS REI60, REI120 AND MULTIPURPOSE – SCREW FASTENING

Homologation no.
for REI doors
BZ050REI060P027F1
BZ050REI120P025F1

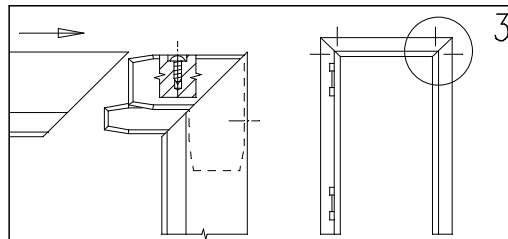
163-GB
5001500/2 - 06/13



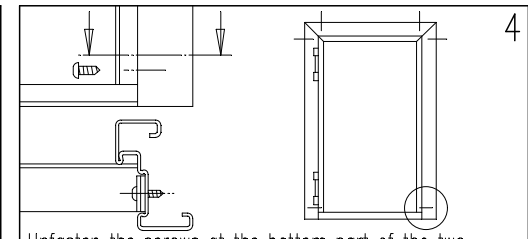
1
Before to wall up the subframe you have to open the clamps (variable quantity). Fix it perfectly perpendicular and smooth in the wall. Respect the finished floor level (FFL). At the end of the placing take away the spacers.



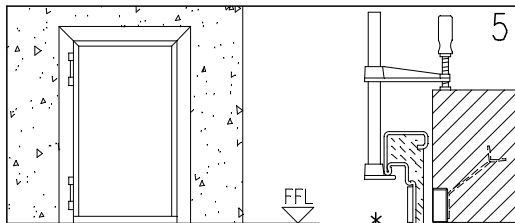
2
For door with environmental characteristics see also the enclosed complementary installation instructions. Verify the opening direction of the door. Unpack the door and verify the correspondence between the wall opening and the dimension printed on the sticker applied on the frame. Check the FFL.



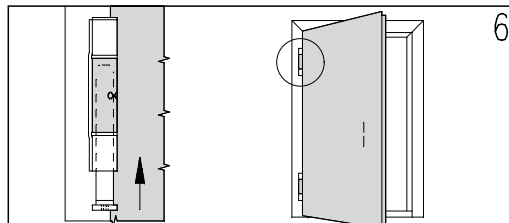
3
Set together the frame profiles with black joints; unfasten the screws present in the joints so that they enter the holes on frames until the connections get rigid.



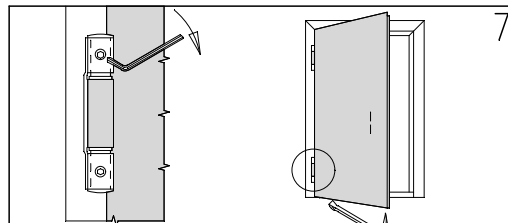
4
Unfasten the screws at the bottom part of the two jambs and fix them again inserting the jamb distance, without removing the self expanding gasket (to be present in fire-rated doors only).



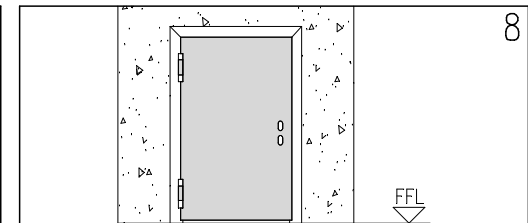
5
Insert the door frame in the wall opening respecting the finished floor level and fasten it temporarily with a clamp. * Multipurpose doors without insulations and self expanding gasket.



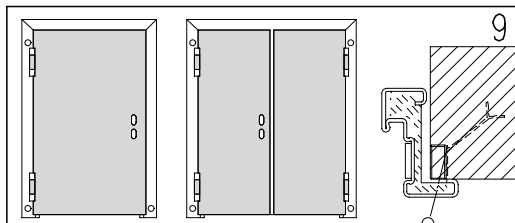
6
Unpack door leaf without removing distancers and wedges of PA. Place it in the frame inserting pivot with spring in upper hinge on left doors and in lower on right doors.



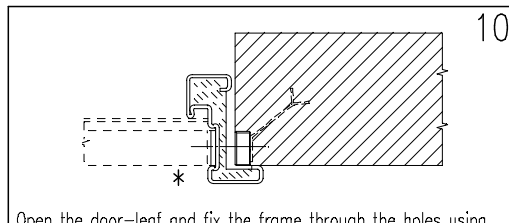
7
Bring the main hinge bearings in contact with each other through the use of the screw thread. Operation to be carried out with the maximum care with the aid of a lever.



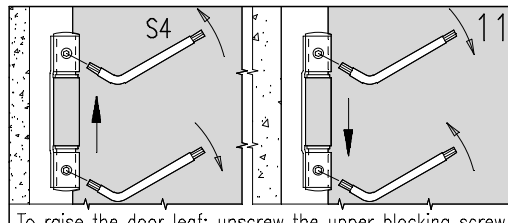
8
Close the door and verify the squareness of the whole door, respecting the level and the plumb. Fix definitively the frame with the clamps.



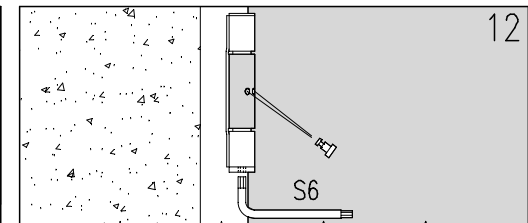
9
Bore through the frame in the points marked in the drawing (◊). Fix it with self-tapping screws Ø5,5mm or wall screws T.C. Ø7,5mm (screws not supplied).



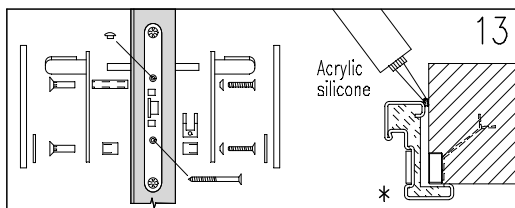
10
Open the door-leaf and fix the frame through the holes using self-tapping screws Ø5,5mm or wall screws T.C. Ø7,5mm. Insert spacers between the frame and the wall if necessary. Remove the lower spacer and fix the jambs through the holes at the bottom with above defined screws. The screws are at customer's expense.



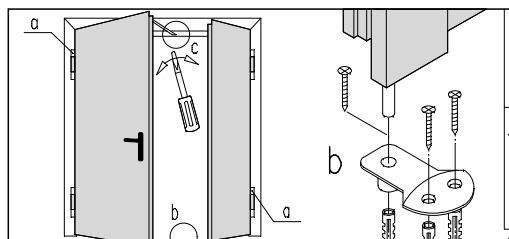
11
To raise the door leaf: unscrew the upper blocking screw, screw on the lower one, screw on the upper one again. To lower the door leaf: unscrew the lower blocking screw, screw on the upper one. Operation to be carried out with the maximum care with the aid of a lever.



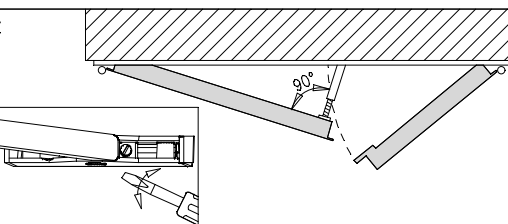
12
Wind up the spring hinge in the opening direction inserting the tension pin. Even if self closing is not needed or overhead doorclosers are installed, wind up the hinge spring anyway blocking it with the tension pin.



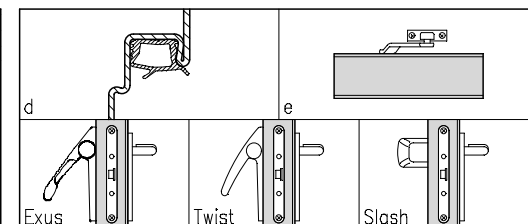
13
Remove the spacers between frame and leaf and assemble the handle. Remove the coloured sticker from the frame by means of hot air, or clean any remains using the product "Ecosolvente A/955" by "Recall". The possible application of silicone (for aesthetic reasons) on the push side perimeter of the doorframe is at customer's expense.



14
RC/STD (part. "c") obligatory only for fire-rated doors; RC2 obligatory for fire-rated doors with environmental characteristics.



15
For double leaf doors use the same assemble procedure adding: a) Load two pivot with springs - b) Install the catch set in the floor - c) In case of RC/STD adjust the closing regulator (arm position perpendicular to the main leaf).



16
Optionals: d) rebate sealing - e) overhead doorcloser (the spring must be anyhow slightly loaded) - EXUS, TWIST or SLASH panic bars.

INSTALLATION HANDBOOK, APPLICATION AND MAINTENANCE FOR PROGET DOORS REI60, REI120 AND MULTIPURPOSE SCREW FASTENING

163-GB

GENERAL NOTES

STANDARD: The assemble instructions have to be followed in every detail to respect the test conditions and assure the perfect functioning of the door, including the self-closing. Furthermore a regular service is necessary. MULTIPURPOSE doors are not fitted with thermally expanding seals and closing regulators.

LIABILITY: It is duty of the installer to follow the installation instructions in any detail, specifically point 7, 11 and 12, in order to guarantee the safety of the end-users.

CEMENT WORKS: It's under customer's responsibility to execute the brickworks according to the norm UNI 9723.1990/A1, to wall up the subframe with grout as indicated in box 1 of the present instructions and to keep the wall integral in particular in the fixing points of the door with the subframe and the masonry itself.

FINISHINGS: The serial door is finished with an epoxy-polyester powder paint oven-baked at 180° C. The surface is gofferred and particularly resistant. In case an additional paint is desired we advise to follow these instructions:

- make smooth the surfaces with sandpaper and dust them
- give a first hand of opaque 2 components epoxide using the product ALCEA EPOX 5203 / 0059 (beige)
- finish the surfaces with enamels or paints to your choice.

CLEANING: The doors are supplied from the factory clean and packed. We suggest to use a clothe and soaped water only. Do not scratch the surfaces.

WARRANTY: The manufacturer gives warranty as per Italian law (C.C.1495). Any claim for missing or damaged goods have to be recorded by inserting a written remark in the delivery notes and must be notified the maximum within eight days from the date of materials receipt.

CURRENT ACCESSORIES CE MARKED:

Lock Std015: **CE** 0497/CPD/4265/11 - EN 12209:2003/AC - 3 M 3 1 0 C 2 H A 2 0
 Hinges: **CE** 0789-CPD-2005 - EN 1935:2004 - 4 7 7 1 1 4 0 14
 Closing regulator RC/STD: **CE** CPD-0425-1153 - EN 1158:2003 - 3 5 5/3 1 1 4
 The **CE** marking of the Std 019 lock for inactive leaf of two-leaved doors is only valid if a panic bar or emergency handle is installed onto main leaf.

MAINTENANCE INSTRUCTIONS FOR PROGET DOORSETS

All fire resistant doorsets need regular maintenance in order to verify that no damage occurred and that they close regularly. The scheduled maintenance shall guarantee that the leaf swings correctly and that the self closing mechanism works properly. The doors shall be kept free from any obstructions. Doors must be kept free from obstructions.

Any 5,000 opening cycles but at least every 6 months the following operations shall be carried out:

- Lubricating the ball-bearing hinge.
- Lubricating the spring hinge and the spring after removing the tension pin.
- Wind up the spring inserting the tension pin. Verify that the closing force is sufficient to shut the door if opened to 30±2°.
- Lubricating the lock and the latch.

For double leaf doorsets additional controls shall be carried out:

- Verify the functionality of the secondary leaf's rods and lubricate its guide rail.
- Clean the hole of the floor catch set.
- Lubricate the lock and the rod blocking device (top).
- Verify the regular functionality of the closing regulator (in case of RC/STD, the arm must be in perpendicular position to the main leaf).
- Lubricate the mobile parts of the closing regulator.

Verify the regular functionality of the doorset's accessories (handle, antipanic bar, overhead doorcloser etc.). Their mobile parts shall be lubricated, too.

In case of irregular functioning of the doorset or its accessories contact an authorized installer or replace the damaged accessories.

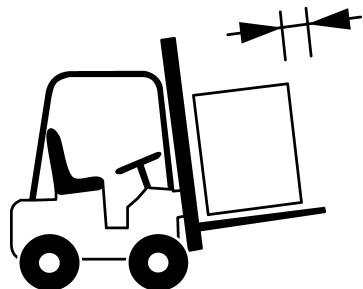
N.B. For lubrication use viscous products.

HANDLING AND STORAGE - COMPLAINTS

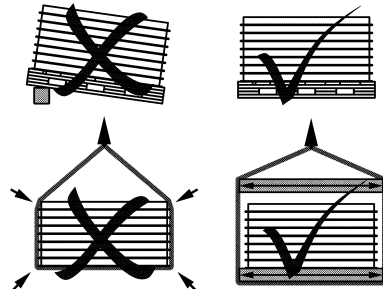
Handling: in case of handling with webbing slings/ropes, place them under the feet of the pallet; avoid to place them under the boards; avoid that the action of slings/ropes produces too much pressure upon the doors, by means of spacers interposed in the upper part. Do not handle the leaves using suction caps.

Storage: it is duty of the company/person taking over the doors to store them in a suitable place so that they will be protected from the natural agents and from the direct sun rays. If during transportation or truck unloading it rains or snows on the doors it is necessary to remove immediately the nylon film from each leaf and doorframe, put them in vertical position to dry appropriately.

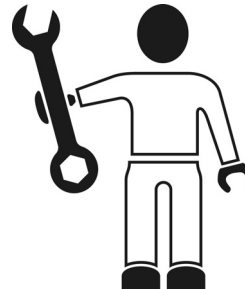
Complaints: in case of external visible defects on doors, they have to be marked in the copy of the transportation document to be returned to the forwarder and notified to the manufacturer by registered mail within 48 hours. We remember that according to our general conditions intrinsic defects have to be notified to the manufacturer within 8 days from the delivery date by registered mail. Goods with defects never have be utilised or assembled, they should be stored at disposal for controls by the manufacturer appointed person.



Move the materials with appropriate means.



Store and handle the materials with care.



Assemble by qualified staff only.



Do not expose the materials to the natural agents.